

# Gruffalo Cave

Follow the simple instructions below with the help of a grown up, to make your own Gruffalo cave just like the set in the show!

Why not also make some puppets and get your family to help you perform The Gruffalo's Child Live on Stage in your living room.

## Things you will need:

- 2 cups of flour
- 2 cups of water
- A mixing bowl
- A wooden spoon
- 1 balloon
- A permanent marker
- Some newspaper
- Paints



Enya Daly & Skyler Ellis in The Gruffalos Child (image Heidrun Lohr)

## Instructions:

### Step 1 — Make the Paper Mache Glue

- Put the flour and water together in the mixing bowl.
- Mix them together until the glue is smooth and pasty.
- Tip: You may need to add more water if it's too thick.



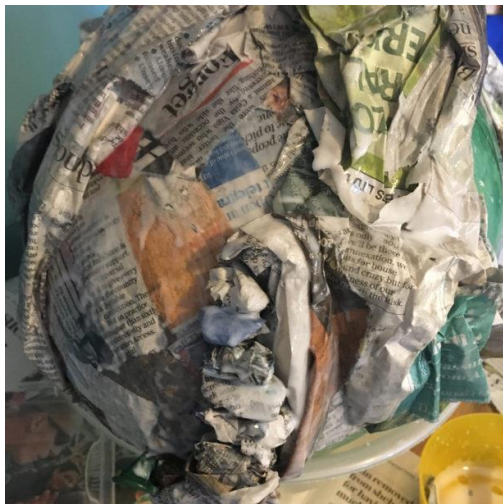
### Step 2 — Building the Cave

- Blow up the balloon and draw the cave entrance onto the balloon with a permanent marker.
- Sit the balloon in a small bowl to keep it in place and steady.



- Tear the newspaper into strips. These will be dipped into the glue and stuck on the balloon to make the cave.

- **Stick a single layer of paper strips around the balloon.**
- **Tip: It is best to work one layer at a time.**
- **Let the paper dry and then repeat to add another layer.**
- **Tip: You can use a hair dryer or leave the balloon outside to speed up the process.**
- **Approximately 5-6 layers will produce a good strong cave!**



- **To add more texture and details to your cave, you can glue rolled up bits of paper and add them to create steps, or an area for a waterfall, or even lava! Be as creative as you'd like!**

### Step 3 — Painting the Cave

- Once you are happy with the layers and the paper is completely dry, you are ready to start painting!
- We've use different tones of green and grey for our cave, like in the show, but you can use any colours that you'd like!



**NOW YOUR GRUFFALO CAVE IS READY FOR THE SHOW!**

**We'd love to see your Gruffalo Cave, so why not take a photo of your wonderful creation and send it to us through the submission form on the activity page!**